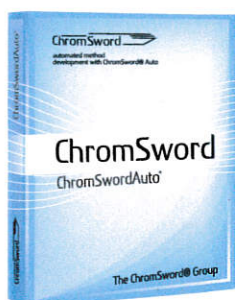




Combination of ChromSwordAuto®, Chromeleon® and UltiMate® 3000 LC Systems is your extremely powerful tool for method development



The UltiMate 3000 LC Method Development Systems with ChromSwordAuto software integrate unique hardware and software features for rapid and fully automated method development.

What is ChromSwordAuto?

ChromSwordAuto is chromatographic software supporting rapid development of separation methods in liquid chromatography with a minimum of experimenting or fully automatically.

Integration with Dionex

The UltiMate 3000 LC Systems and ChromSwordAuto Solution for automated method development provides a technique for fast method scouting and optimization by automatically testing and optimizing method parameters such as:

- solvent composition
- gradient profile
- stationary phase
- pH value of the mobile phase
- column temperature
- flow rate

Highest Speed and Performance

The UltiMate 3000 LC Systems in combination with ChromSwordAuto support automated rapid method development and fine optimization. No matter if you separate simple or complex mixtures with many peaks, the ChromSwordAuto and UltiMate 3000 LC Systems provide you with the ultimate performance required to discover the best separation conditions.

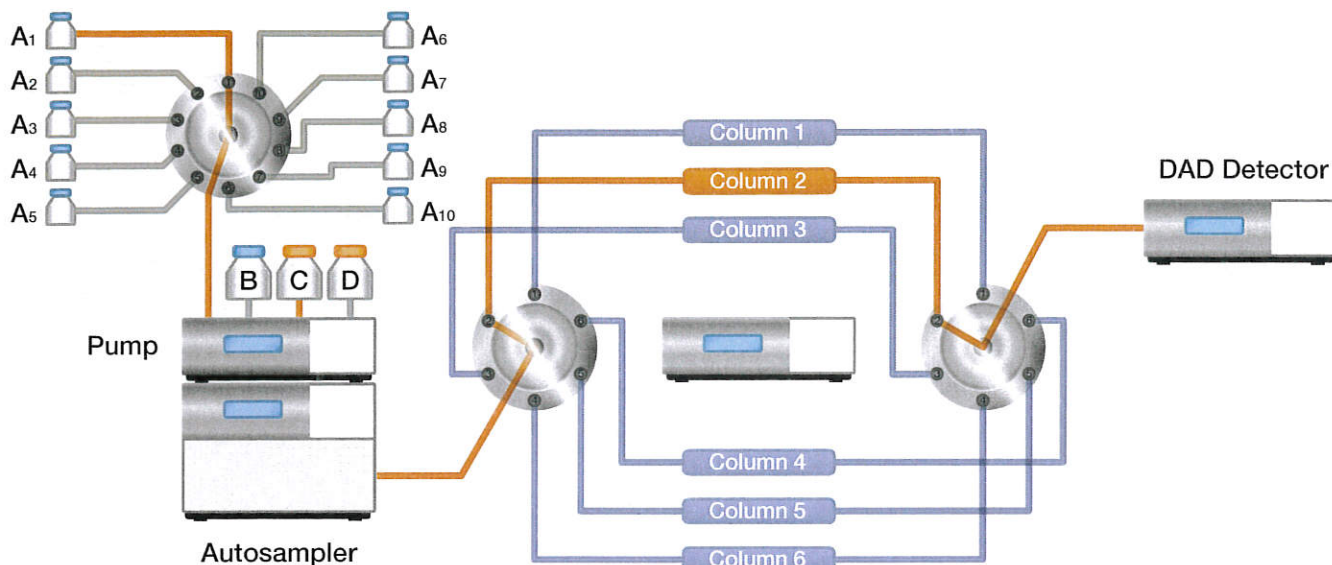
Are you looking for a better and more effective way to develop new HPLC methods? Does your current LC method lack resolution, and do you want to separate more peaks? Do you want to find hidden impurities? Then learn more about the benefits which are provided by the UltiMate 3000 LC Systems in combination with ChromSwordAuto.

You extremely save your time!

"The manually developed method for the drug candidate mixture took two weeks of user time to compose due to the required separation of the large number of unknown impurities. The method obtained by ChromSword®-Auto was developed in 3 days of unattended work (one day for the automated screening and 2 days for the automated optimization). Additionally, the ChromSword®-Auto method provided a more complete separation all components in the mixture. The time saving estimation between the two methods amounted to 8 days."

Patrik Likulay, Ph.D.

**Pfizer Global Research and Development,
Michigan Pharmaceutical Sciences,
2800 Plymouth Road, Ann Arbor, MI 48105, USA
Journal of Chromatography A, 1107 (2006) 79–87**



Maximum level of versatility

Powered by ChromSwordAuto and Chromeleon the UltiMate 3000 LC Systems development is characterized by a maximal level of versatility:

Method Scouting

Automatic column, solvent and buffer screening with up to 6 columns, 3 solvents, 10 buffers and different temperatures provides a highly productive approach to testing all required parameters.

Rapid Optimization

ChromSwordAuto intelligent rapid optimization procedure allows to develop good methods extremely quickly.

Power Rapid Optimization

Combining ChromSwordAuto rapid optimization procedure with the multi-column, solvent, buffers options of UltiMate 3000 LC Systems provides a powerful tool for finding separation conditions for very complex separations.

Fine Optimization

The unique ChromSwordAuto fine optimization procedure performs detail search for optimal isocratic and gradient conditions.

Robustness Test

Are your methods robust? ChromSword AutoRobust and UltiMate 3000 LC Systems will automatically run full robustness testing.

Improved efficiency!

"For a challenging separation, especially for separation of multiple pairs of peaks, an automated method development approach will be much more efficient than a manual process."

Abu Rustum, Ph.D.
Global Quality Services – Analytical Sciences, Schering-Plough Corporation,
 Union, NJ 07083, USA
 Journal of Chromatography A, 1163 (2007) 145

Let ChromSwordAuto help you!

ChromSword 

Germany

Im Wiesengrund 49 B
 64367 Muehlthal, Germany
 phone: +49 6151 136777

Latvia

17 Kalna Str., Riga
 LV1003, Latvia
 phone: +371 22515444
 fax +371 67142225

www.chromsword.com
 info@chromsword.com